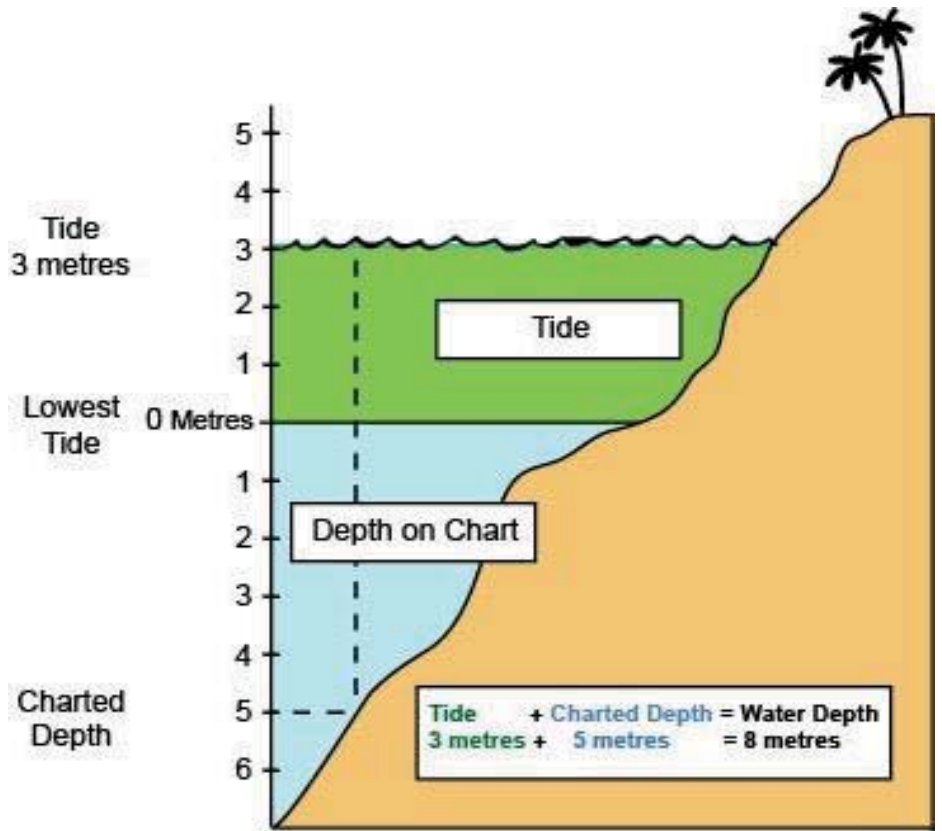
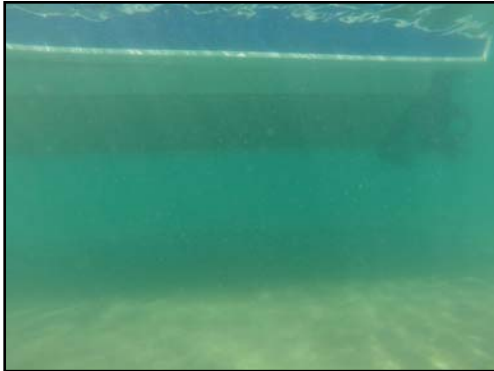


Tides



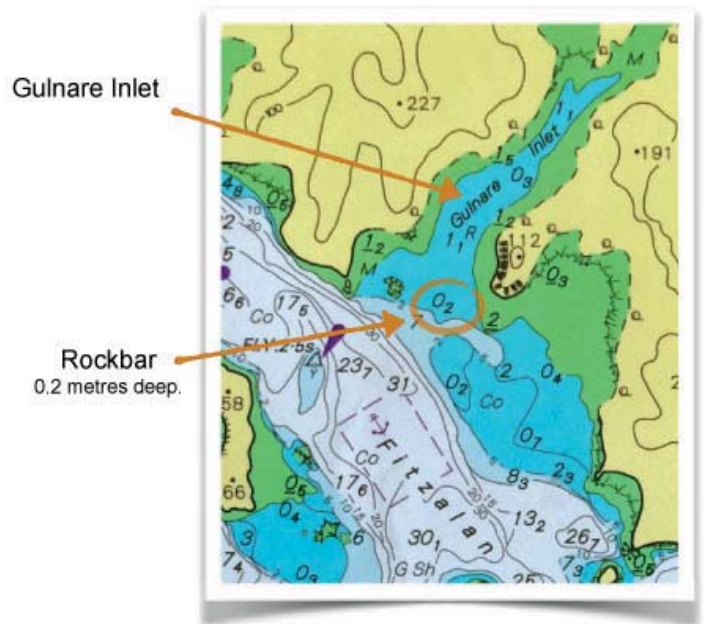
Tide and Depth



Water Depth = Chart Depth + Tide

JULY

Time	m	Time	m
1 0414	0.85	16 0508	0.72
0952	2.72	1056	2.75
WE 1543	0.35	TH 1642	0.72
2233	3.78	2318	3.60
2 0454	0.78	17 0543	0.72
1036	2.74	1132	2.75
TH 1623	0.31	FR 1716	0.72
2313	3.86	2351	3.60
0536	0.72	18 0606	0.72
0952	2.75	1056	2.75

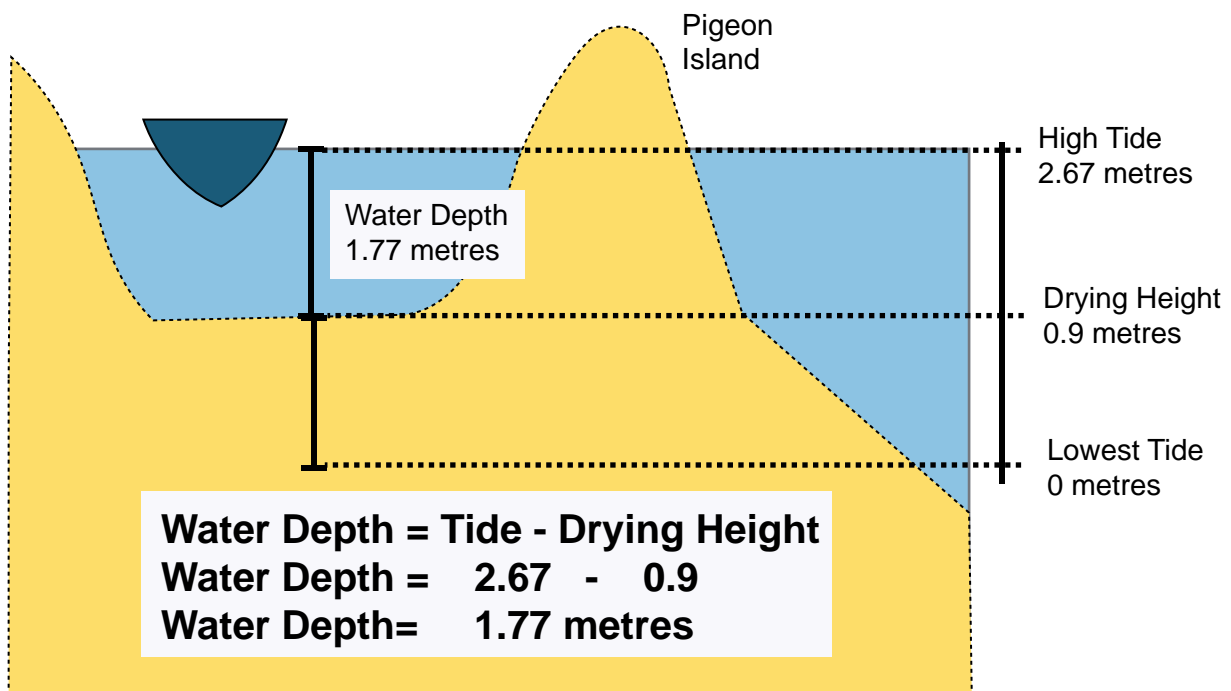
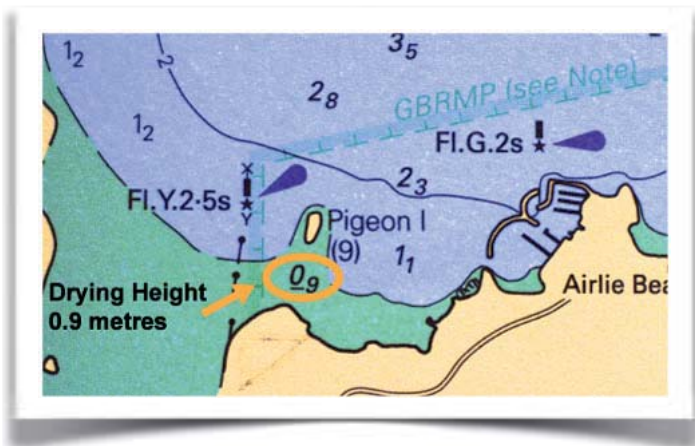
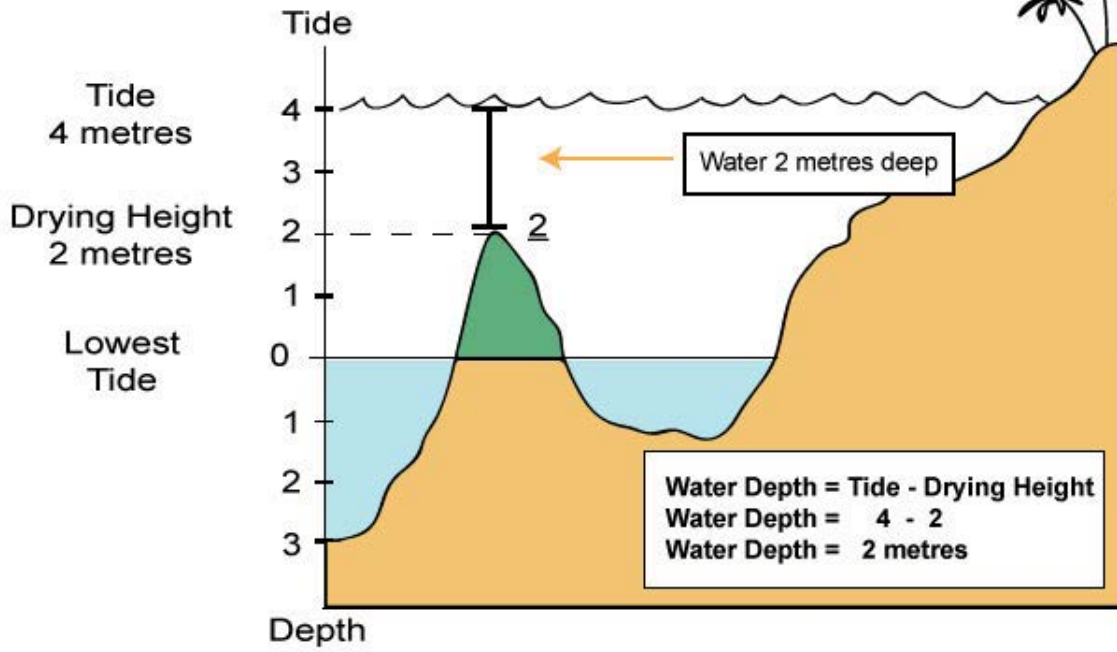


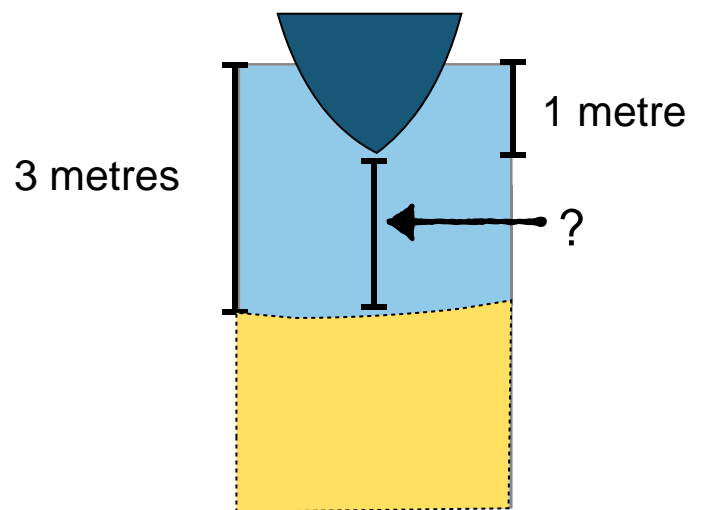
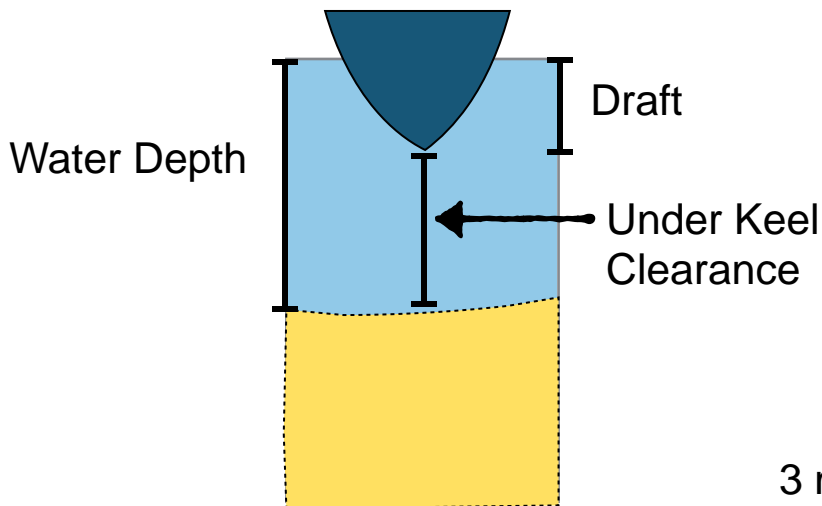
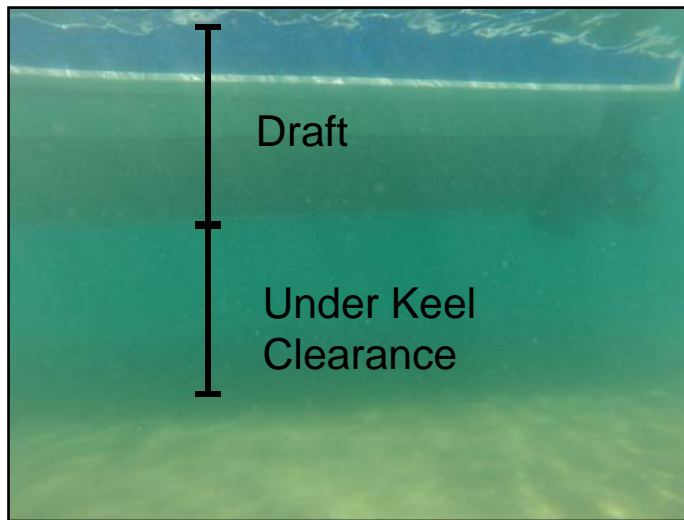
Water Depth = Chart Depth + Tide

Water Depth = 0.2 + 2.74

Water Depth = 2.94 metres

DRYING HEIGHT





Under Keel Clearance = Water Depth - Draft

Under Keel Clearance = Water Depth - Draft

Under Keel Clearance = 3 - 1

Under Keel Clearance = 2 metres