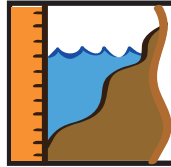


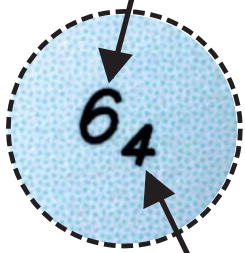
Chartwork



# Depth, Drying Height and Elevation on the Marine Chart

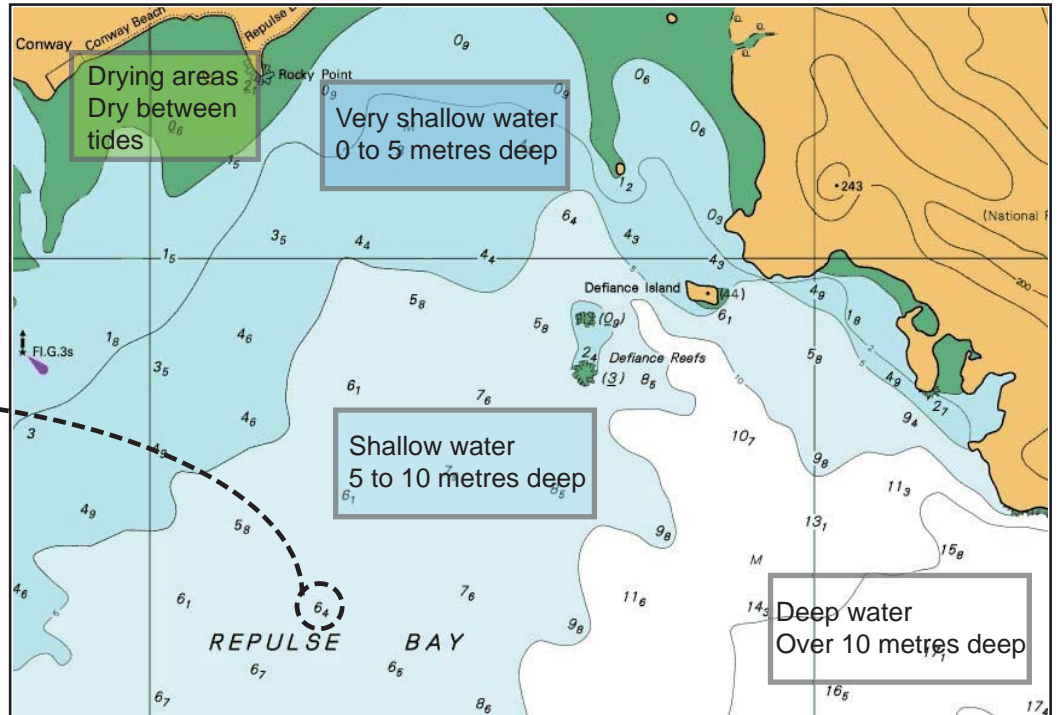
## Colour codes

Large number is a whole number



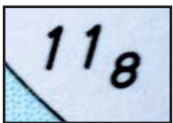
Small number is a decimal number.

6.4 metres deep

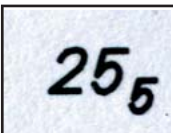


## Depth in Metres

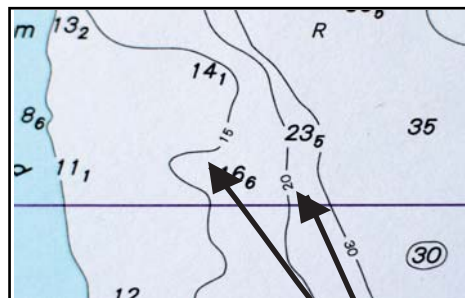
## Contour Lines



= 11.8 metres



= 25.5 metres



Contour Lines show water of the same depth



Water along a 10 metre contour is 10 metres deep.

Depth written on a marine chart is the depth of the water at **lowest tide** in an area.

The lowest tide is called the **Lowest Astronomical Tide (LAT)** or **Chart Datum**.

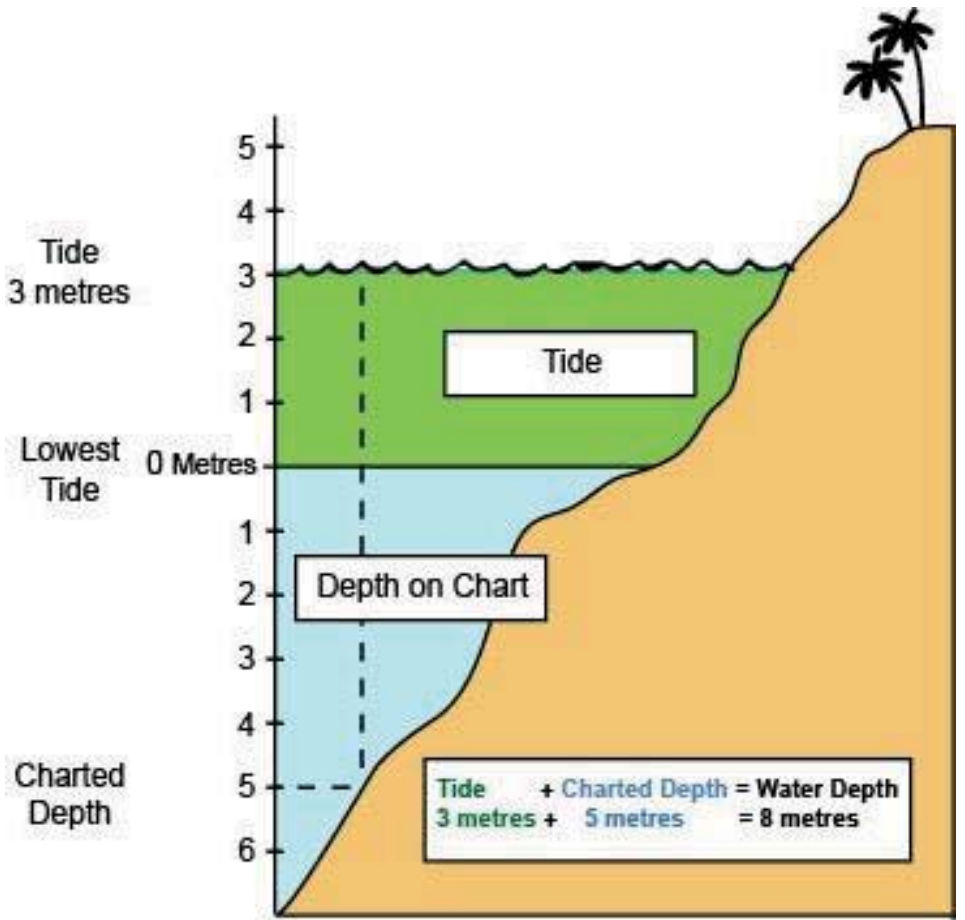




**Chartered Depth at lowest tide**



**Chartered Depth - add tide**



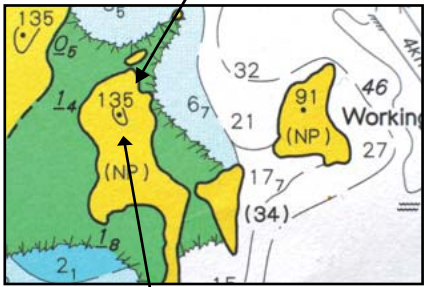
**Elevation** is the height of a landmark above high tide.



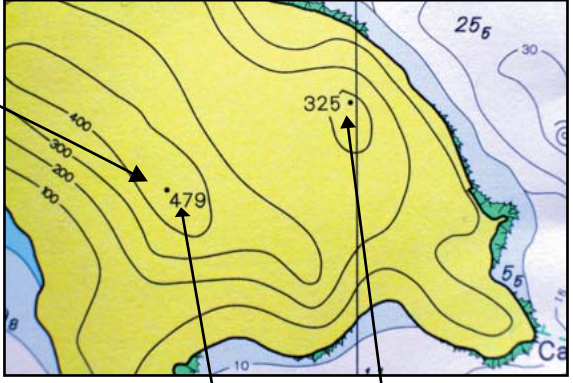
**Elevation** is written in metres (m).

**Elevation** is used to find landmarks from the sea.

The **highest point** is the **dot** on the chart.



This island is 135 metres high.



This peak is 479 metres high.

This peak is 325 metres high.



**Drying Areas  
Drying Heights**



**Drying area**-dry between high and low tides



Large **drying areas** are coloured green on a marine chart



**Drying height** is the height above the lowest tide when a rock, sandbar or mudflat dries.

