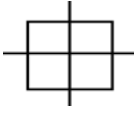


A **course** is marked between **waypoints**.

A **course** is a path over water that you want a boat to travel


### Plot Course

A **waypoint** is a point on a course

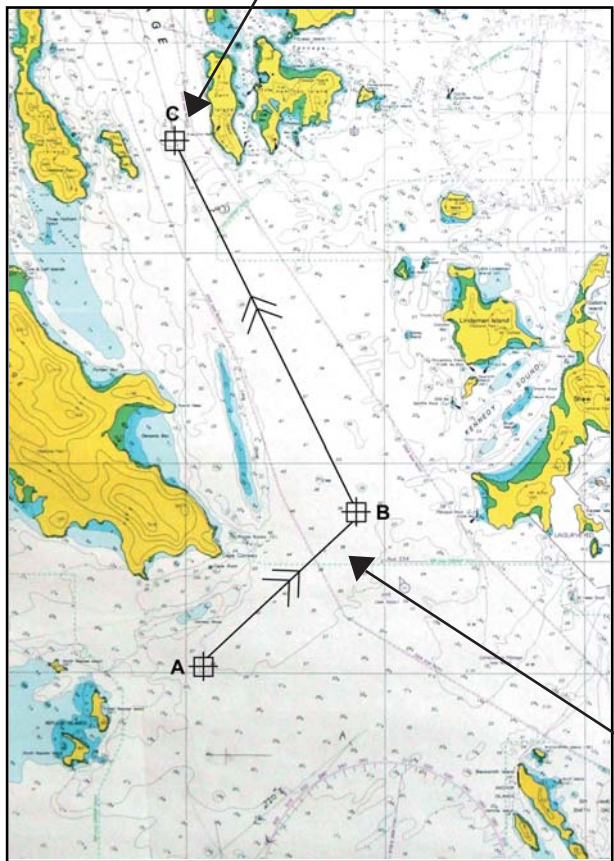
Waypoint Symbol 

- You will need:
- Pencil
  - Parallel rule
  - Dividers

1. Plot waypoints
2. Mark legs
3. Check course for hazards
4. Write waypoint coordinates
5. Measure distance
6. Measure course headings

**Ground track** symbol: 

The line between 2 waypoints is called a **leg**



Leg A-B

**Waypoint Coordinates**  
**Waypoint A**  
 20° 34.8' S  
 148° 55.4' E  
**Waypoint B**  
 20° 31.5' S  
 148° 59' E  
**Waypoint C**  
 20° 22.4' S  
 148° 54.7' E

**Course Summary**

**A-B**  
 COG 045° T 4.7 M

**B-C**  
 COG 336° T 9.9 M

