



# Reading Chart Scales

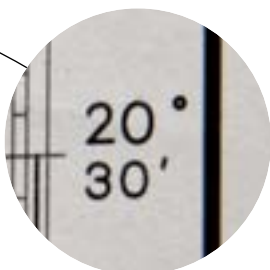
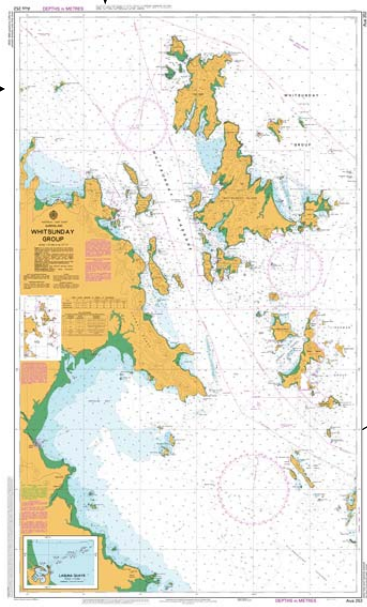
Chart Scale is used to plot position and measure distance

Charts have scales of latitude and longitude

Longitude scale on the top and bottom

Latitude scale is written on the sides.

The scales show degree and minutes



Degree Symbol

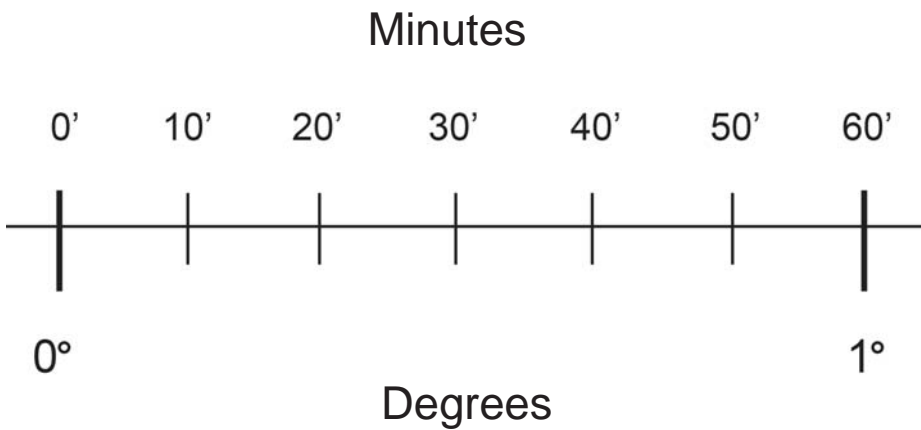


Minutes Symbol

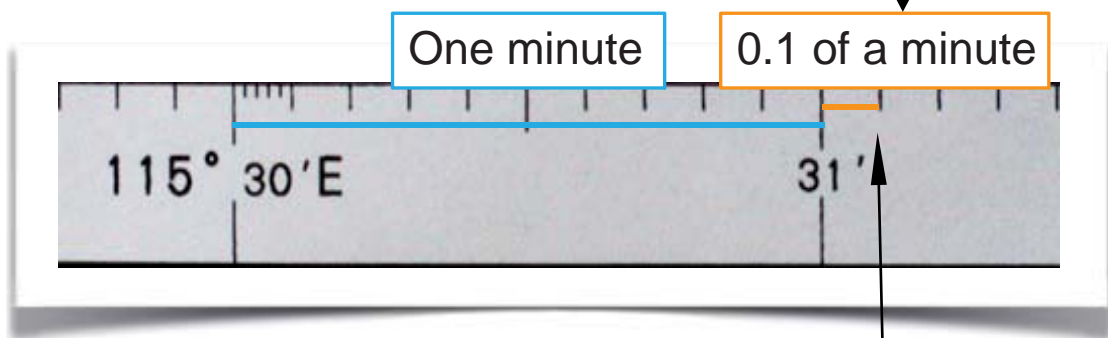


# Degree, Minutes and Decimal Minutes

Degrees are too large to show position accurately.  
Degrees are broken into smaller parts called minutes.  
**60 minutes = 1 degree.**



Minutes are broken into 10 parts called **decimal minutes**



**115° 31.1' E**

115 Degrees

31 Minutes

0.1 Decimal Minute

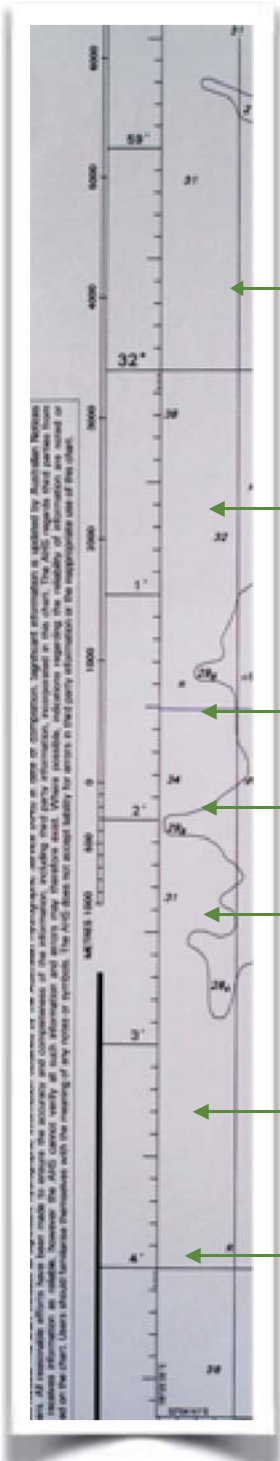
# Latitude

# Reading Chart Scale

SCALE 1:37 500

Different charts show different scales. These scales are from a chart showing 1:37 500. The area shown on the chart is 37 500 times as big in real life.

Find degrees first, then minutes then decimal minutes.



31° 59' S

32° S

32° 1' S

32° 1.3' S

32° 2' S

32° 3' S

32° 3.7' S

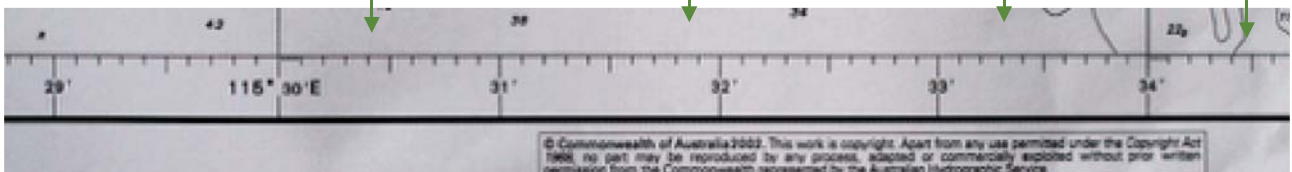
# Longitude

115° 33.8' S

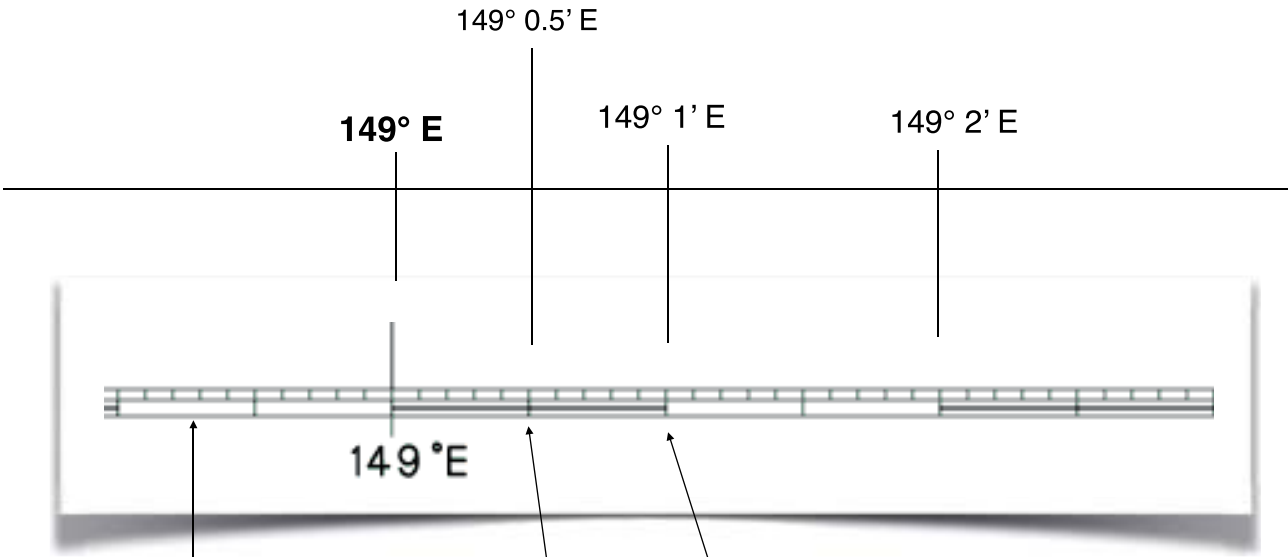
115° 31' E

115° 32' E

115° 33' E



© Commonwealth of Australia 2002. This work is copyright. Apart from any use permitted under the Copyright Act 1968, no part may be reproduced by any process, stored or commercially exploited without prior written permission from the Commonwealth represented by the Australian Hydrographic Service.



Black bars to separate minutes.

Not all minutes labelled. Count on from the nearest labelled minute or degree.

Decimal minutes marked

Scaled marked at 0.5 minute mark, halfway between each minute.